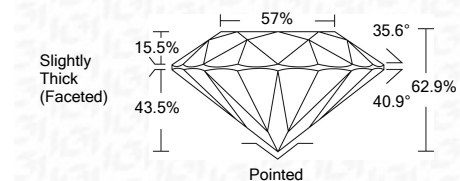




September 10, 2025
IGI Report Number 726513122
Description NATURAL DIAMOND
Shape and Cutting Style ROUND BRILLIANT
Measurements 7.52 - 7.58 X 4.75 MM

GRADING RESULTS
Carat Weight 1.70 CARAT
Color Grade F
Clarity Grade VS 2
Cut Grade EXCELLENT



ADDITIONAL GRADING INFORMATION
Polish EXCELLENT
Symmetry EXCELLENT
Fluorescence SLIGHT
Inscription(s) IGI 726513122
Comments: HEARTS & ARROWS



September 10, 2025
IGI Report No: 726513122
ROUND BRILLIANT
7.52 - 7.58 X 4.75 MM
1.70 CARAT
F
VS 2
EXCELLENT
62.9%
57%
Slightly Thick (Faceted)
Pointed
EXCELLENT
EXCELLENT
SLIGHT
IGI 726513122
Comments: HEARTS & ARROWS

ELECTRONIC COPY

DIAMOND REPORT

September 10, 2025
IGI Report Number 726513122
Description NATURAL DIAMOND
Shape and Cutting Style ROUND BRILLIANT
Measurements 7.52 - 7.58 X 4.75 MM

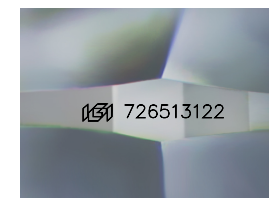
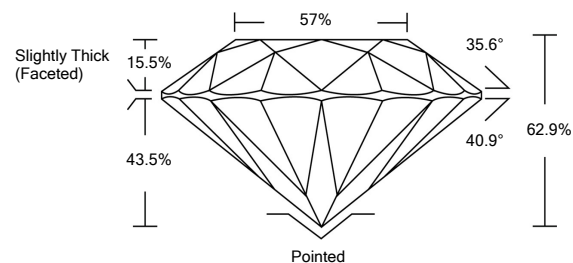
GRADING RESULTS

Carat Weight 1.70 CARAT
Color Grade F
Clarity Grade VS 2
Cut Grade EXCELLENT

ADDITIONAL GRADING INFORMATION

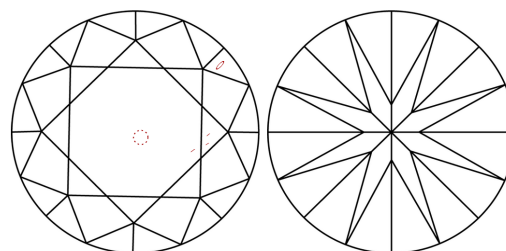
Polish EXCELLENT
Symmetry EXCELLENT
Fluorescence SLIGHT
Inscription(s) IGI 726513122
Comments: HEARTS & ARROWS

PROPORTIONS



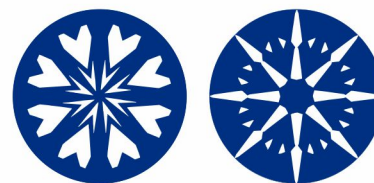
Sample Image Used

CLARITY CHARACTERISTICS



KEY TO SYMBOLS

Red symbols indicate internal characteristics.
Green symbols indicate external characteristics.



COLOR

Table with columns D-F, G-J, K-M, N-R, S-Z, FANCY and rows Colorless, Near Colorless, Slightly Tinted, Very Light Color, Light Color.

CLARITY

Table with columns IF, VVS1-2, VS1-2, SI1-2, I1-3 and rows Internally Flawless, Very Very Slightly Included, Very Slightly Included, Slightly Included, Included.

