



**INTERNATIONAL  
GEMOLOGICAL  
INSTITUTE**

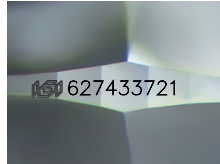
627433721



May 7, 2024  
IGI Report Number 627433721  
NATURAL DIAMOND  
ROUND BRILLIANT  
6.21 - 6.26 x 3.93 mm  
Carat Weight 0.95 CARAT  
Color Grade D  
Clarity Grade VS 2  
Cut Grade EXCELLENT  
Polish EXCELLENT  
Symmetry EXCELLENT  
Fluorescence SLIGHT  
Inscription(s) IGI 627433721

**DIAMOND REPORT**

**ELECTRONIC COPY**



Sample Image Used

May 7, 2024  
IGI Report Number 627433721  
Description NATURAL DIAMOND  
Shape and Cutting Style ROUND BRILLIANT  
Measurements 6.21 - 6.26 x 3.93 mm

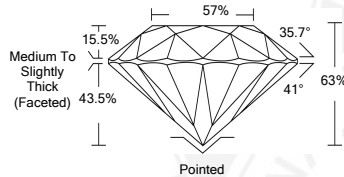
**GRADING RESULTS**

Carat Weight 0.95 CARAT  
Color Grade D  
Clarity Grade VS 2  
Cut Grade EXCELLENT

**ADDITIONAL GRADING INFORMATION**

Polish EXCELLENT  
Symmetry EXCELLENT  
Fluorescence SLIGHT

Identification Features CRYSTAL, CLOUD  
Inscription(s) IGI 627433721



**COLOR**

D - F	G - J	K - M	N - R	S - Z	FANCY
Colorless	Near Colorless	Slightly Tinted	Very Light Color	Light Color	

**CLARITY**

IF	VVS <sup>1-2</sup>	VS <sup>1-2</sup>	SI <sup>1-2</sup>	I <sup>1-2</sup>
Internally Flawless	Very Very Slightly Included	Very Slightly Included	Slightly Included	Included



May 7, 2024  
IGI Report Number 627433721  
NATURAL DIAMOND  
ROUND BRILLIANT  
6.21 - 6.26 x 3.93 mm  
Carat Weight 0.95 CARAT  
Color Grade D  
Clarity Grade VS 2  
Cut Grade EXCELLENT  
Polish EXCELLENT  
Symmetry EXCELLENT  
Fluorescence SLIGHT  
Inscription(s) IGI 627433721



© IGI 2020, International Gemological Institute

FD - 10 20

THIS DOCUMENT WAS PRODUCED WITH THE FOLLOWING SECURITY MEASURES: SPECIAL DOCUMENT PAPER, INK SCREENS, WATERMARK BACKGROUND DESIGNS, HOLOGRAM AND OTHER SECURITY FEATURES NOT LISTED AND DO EXCEED DOCUMENT SECURITY INDUSTRY GUIDELINES.