



**INTERNATIONAL
GEMOLOGICAL
INSTITUTE**

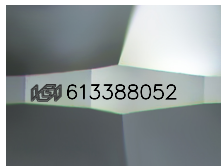
613388052



January 29, 2024
IGI Report Number 613388052
NATURAL DIAMOND
ROUND BRILLIANT
5.08 - 5.12 x 3.15 mm
Carat Weight 0.51 CARAT
Color Grade D
Clarity Grade SI 1
Cut Grade EXCELLENT
Polish EXCELLENT
Symmetry EXCELLENT
Fluorescence SLIGHT
Inscription(s) IGI 613388052
Comments: IDEAL CUT ROUND
BRILLIANT

DIAMOND REPORT

ELECTRONIC COPY



Sample Image Used

January 29, 2024
IGI Report Number 613388052
Description NATURAL DIAMOND
Shape and Cutting Style ROUND BRILLIANT
Measurements 5.08 - 5.12 x 3.15 mm

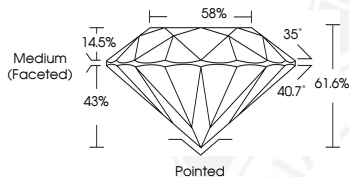
GRADING RESULTS

Carat Weight 0.51 CARAT
Color Grade D
Clarity Grade SI 1
Cut Grade EXCELLENT

ADDITIONAL GRADING INFORMATION

Polish EXCELLENT
Symmetry EXCELLENT
Fluorescence SLIGHT

Identification Features CRYSTAL, FEATHER, CLOUD
Inscription(s) IGI 613388052
Comments: IDEAL CUT ROUND BRILLIANT



COLOR

D - F	G - J	K - M	N - R	S - Z	FANCY
Colorless	Near Colorless	Slightly Tinted	Very Light Color	Light Color	

CLARITY

IF	VVS ¹⁻²	VS ¹⁻²	SI ¹⁻²	I ¹⁻²
Internally Flawless	Very Very Slightly Included	Very Slightly Included	Slightly Included	Included



January 29, 2024
IGI Report Number 613388052
NATURAL DIAMOND
ROUND BRILLIANT
5.08 - 5.12 x 3.15 mm
Carat Weight 0.51 CARAT
Color Grade D
Clarity Grade SI 1
Cut Grade EXCELLENT
Polish EXCELLENT
Symmetry EXCELLENT
Fluorescence SLIGHT
Inscription(s) IGI 613388052
Comments: IDEAL CUT ROUND
BRILLIANT



© IGI 2020, International Gemological Institute

FD - 10 20

THIS DOCUMENT WAS PRODUCED WITH THE FOLLOWING SECURITY MEASURES: SPECIAL DOCUMENT PAPER, INK SCREENS, WATERMARK BACKGROUND DESIGNS, HOLOGRAM AND OTHER SECURITY FEATURES NOT LISTED AND DO EXCEED DOCUMENT SECURITY INDUSTRY GUIDELINES.