



**INTERNATIONAL
GEMOLOGICAL
INSTITUTE**

622466377

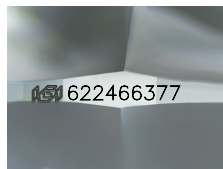


March 19, 2024
IGI Report Number 622466377
NATURAL DIAMOND
ROUND BRILLIANT
5.12 - 5.15 x 3.13 mm
Carat Weight 0.50 CARAT
Color Grade E
Clarity Grade SI 1
Cut Grade EXCELLENT
Polish EXCELLENT
Symmetry EXCELLENT
Fluorescence VERY SLIGHT
Inscription(s) IGI 622466377
Comments: IDEAL CUT ROUND BRILLIANT

DIAMOND REPORT

ELECTRONIC COPY

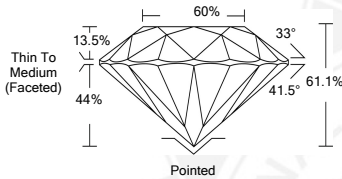
March 19, 2024
IGI Report Number 622466377
Description NATURAL DIAMOND
Shape and Cutting Style ROUND BRILLIANT
Measurements 5.12 - 5.15 x 3.13 mm



Sample Image Used

GRADING RESULTS

Carat Weight 0.50 CARAT
Color Grade E
Clarity Grade SI 1
Cut Grade EXCELLENT



ADDITIONAL GRADING INFORMATION

Polish EXCELLENT
Symmetry EXCELLENT
Fluorescence VERY SLIGHT

Identification Features CRYSTAL, CLOUD
Inscription(s) IGI 622466377
Comments: IDEAL CUT ROUND BRILLIANT

COLOR

D - F	G - J	K - M	N - R	S - Z	FANCY
Colorless	Near Colorless	Slightly Tinted	Very Light Color	Light Color	

CLARITY

IF	VVS ¹⁻²	VS ¹⁻²	SI ¹⁻²	I ¹⁻²
Internally Flawless	Very Very Slightly Included	Very Slightly Included	Slightly Included	Included



March 19, 2024
IGI Report Number 622466377
NATURAL DIAMOND
ROUND BRILLIANT
5.12 - 5.15 x 3.13 mm
Carat Weight 0.50 CARAT
Color Grade E
Clarity Grade SI 1
Cut Grade EXCELLENT
Polish EXCELLENT
Symmetry EXCELLENT
Fluorescence VERY SLIGHT
Inscription(s) IGI 622466377
Comments: IDEAL CUT ROUND BRILLIANT



© IGI 2020, International Gemological Institute

FD - 10 20

THIS DOCUMENT WAS PRODUCED WITH THE FOLLOWING SECURITY MEASURES: SPECIAL DOCUMENT PAPER, INK SCREENS, WATERMARK BACKGROUND DESIGNS, HOLOGRAM AND OTHER SECURITY FEATURES NOT LISTED AND DO EXCEED DOCUMENT SECURITY INDUSTRY GUIDELINES.