



549289355

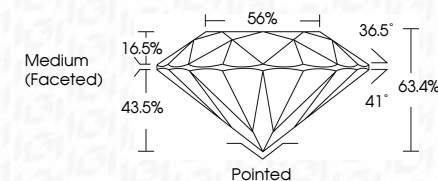
DIAMOND REPORT **ELECTRONIC COPY**



December 13, 2022
 IGI Report Number 549289355
 Description NATURAL DIAMOND
 Shape and Cutting Style ROUND BRILLIANT
 Measurements 6.32 - 6.37 x 4.02 mm

GRADING RESULTS

Carat Weight 1.00 CARAT
 Color Grade F
 Clarity Grade SI 1
 Cut Grade EXCELLENT



December 13, 2022
 IGI Report Number 549289355
 Description NATURAL DIAMOND
 Shape and Cutting Style ROUND BRILLIANT
 Measurements 6.32 - 6.37 x 4.02 mm

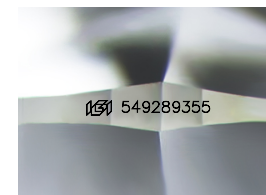
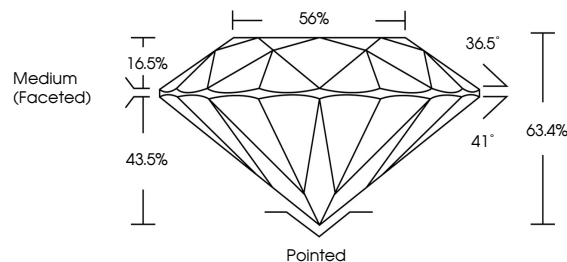
GRADING RESULTS

Carat Weight 1.00 CARAT
 Color Grade F
 Clarity Grade SI 1
 Cut Grade EXCELLENT

ADDITIONAL GRADING INFORMATION

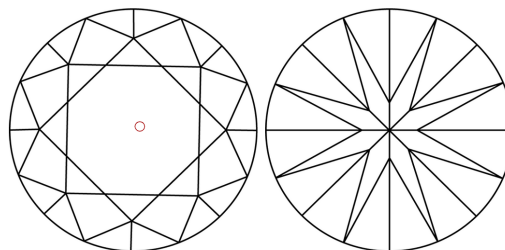
Polish EXCELLENT
 Symmetry EXCELLENT
 Fluorescence SLIGHT
 Inscription(s) IGI 549289355

PROPORTIONS



Sample Image Used

CLARITY CHARACTERISTICS



KEY TO SYMBOLS

Red symbols indicate internal characteristics.
 Green symbols indicate external characteristics.

COLOR

D - F	G - J	K - M	N - R	S - Z	FANCY
Colorless	Near Colorless	Slightly Tinted	Very Light Color	Light Color	

CLARITY

IF	VVS ¹⁻²	VS ¹⁻²	SI ¹⁻²	I ¹⁻³
Internally Flawless	Very Very Slightly Included	Very Slightly Included	Slightly Included	Included

ADDITIONAL GRADING INFORMATION

Polish EXCELLENT
 Symmetry EXCELLENT
 Fluorescence SLIGHT
 Inscription(s) IGI 549289355



IGI



December 13, 2022
 IGI Report No 549289355
 NATURAL DIAMOND
 ROUND BRILLIANT
 6.32 - 6.37 x 4.02 mm
 Carat Weight 1.00 CARAT
 Color Grade F
 Clarity Grade SI 1
 Cut Grade EXCELLENT
 Depth 63.4%
 Table 56%
 Grade Medium (Faceted)
 Culet Pointed
 Polish EXCELLENT
 Symmetry EXCELLENT
 Fluorescence SLIGHT
 Inscription(s) IGI 549289355